



[www.divine-trainings.com](http://www.divine-trainings.com)

# *PTE Academic*

SPEAKING  
PRACTICE TEST 2



COPYRIGHT © 2024 | POWERED BY DIVINE TRAINING  
DIVINE ASSOCIATES REGISTRATION NO. 0083936

# PTE Speaking Practice test 2

## 33 QUESTIONS

### Personal Introduction

Read the prompt below. In 25 seconds, you must reply in your own words, as naturally and clearly as possible. You have 30 seconds to record your response. Your response will be sent together with your score report to the institutions selected by you.

Please introduce yourself. For example, you could talk about one or more of the following:

1. Your interests
2. Your plans for future study
3. Why you want to study abroad
4. Why you need to learn English
5. Why you chose this test

### Question 1 : Read Aloud

Look at the text below. In 40 seconds, you must read this aloud as naturally and clearly as possible. You have 40 seconds to read this text aloud:

#### 1. Universal gravitation

The discovery of universal gravitation displays all the features of the new way of scientific reasoning, which is now so familiar to us. The discovery starts with Newton associating the Moon's behavior with the behavior of rocks falling on the ground.

#### 2. Students

Generally, students who stay off-campus resort to campus buses, for it not only costs less but also helps reach the college campus on time. However, there are separate dormitories for students who wish to stay back on campus for any activity.

#### 3. Polar bears

Polar bears are born on land, but they spend most of their days' time in the cold sea, enjoying swimming and hunting seals. Though aggressive in nature, they do not easily become pugnacious and defer their reactions as much as they can.

#### 4. Turkey

Straddling Asia and Europe across the strait, the old city of Istanbul, Turkey, has embraced diverse cultural influences. Known for its monumental architecture, Istanbul has become a cherished travel destination.

## **5. Animals**

Any animals deprived of their basic sheltering, food, and health rights must be handed over to an NGO. After bringing them back to health, they can be put up for adoption, following substantial background check rules before providing them with new owners.

## **6. Jazz**

Jazz is an African American music genre popular in the United States that has an enchanting effect on the young and intellectuals. Scintillating performances by many bands across the globe have also helped this music style become widely popular.

## **7.Kepler spacecraft**

The Kepler spacecraft has found hundreds of planets and thousands of additional candidates. Exploration of our solar system leads to a view of planets that emphasizes diversity rather than similarity. However, with so many planets out there, some must be like Earth.

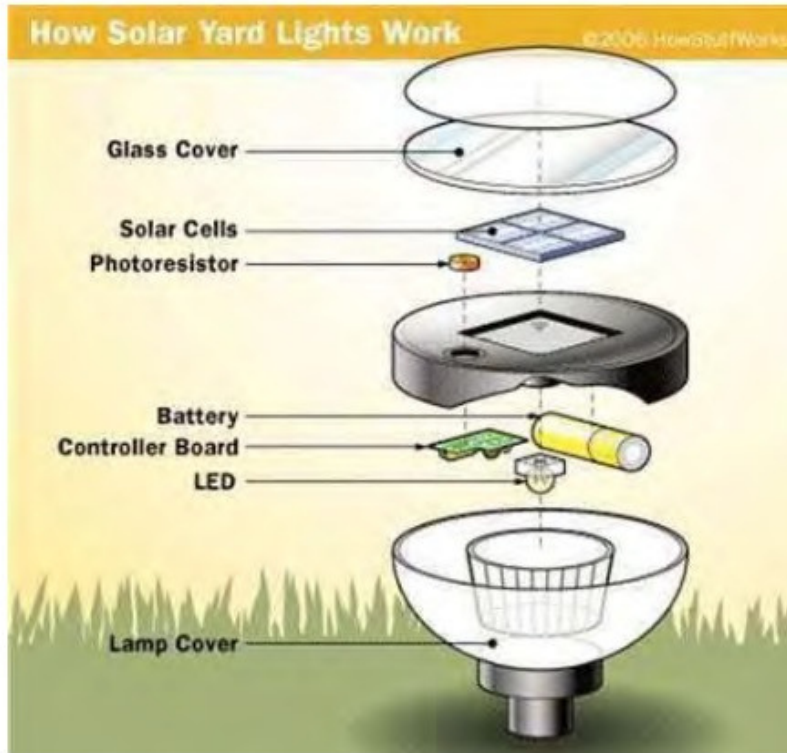
## **Question 2 : Repeat Sentence**

You will hear some sentences in this audio. Pleaserepeat each sentence exactly as you hear it. You will hear each sentence once only.

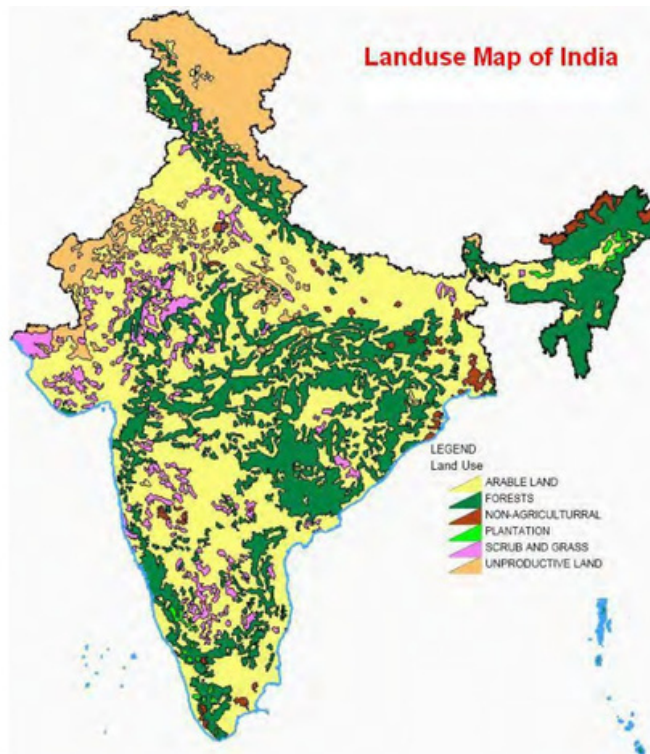
## **Question 3 : Describe Image**

Look at the diagram below. In 25 seconds, please speak what it is showing. You will have 40 seconds to give your response.

**Image 1**

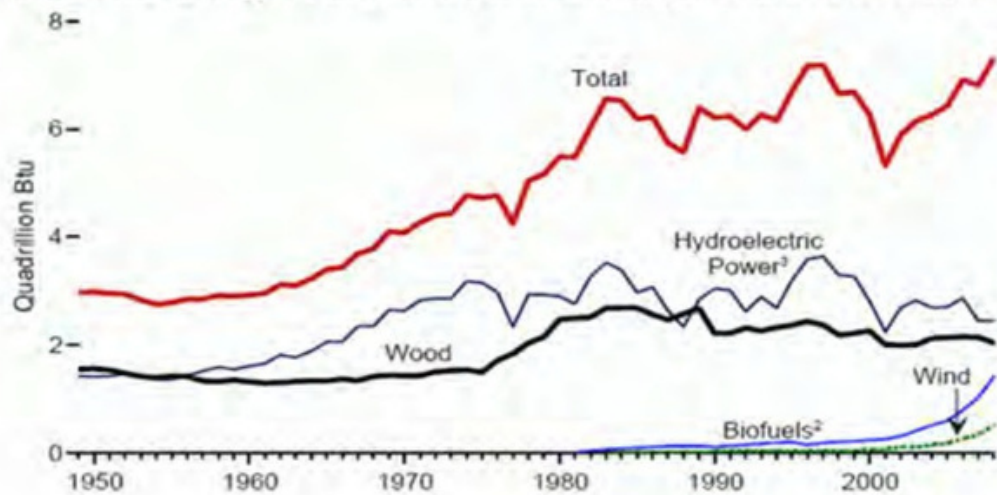


**Image 2**



### Image 3

Renewable Energy Total Consumption and Major Sources, 1949-2008

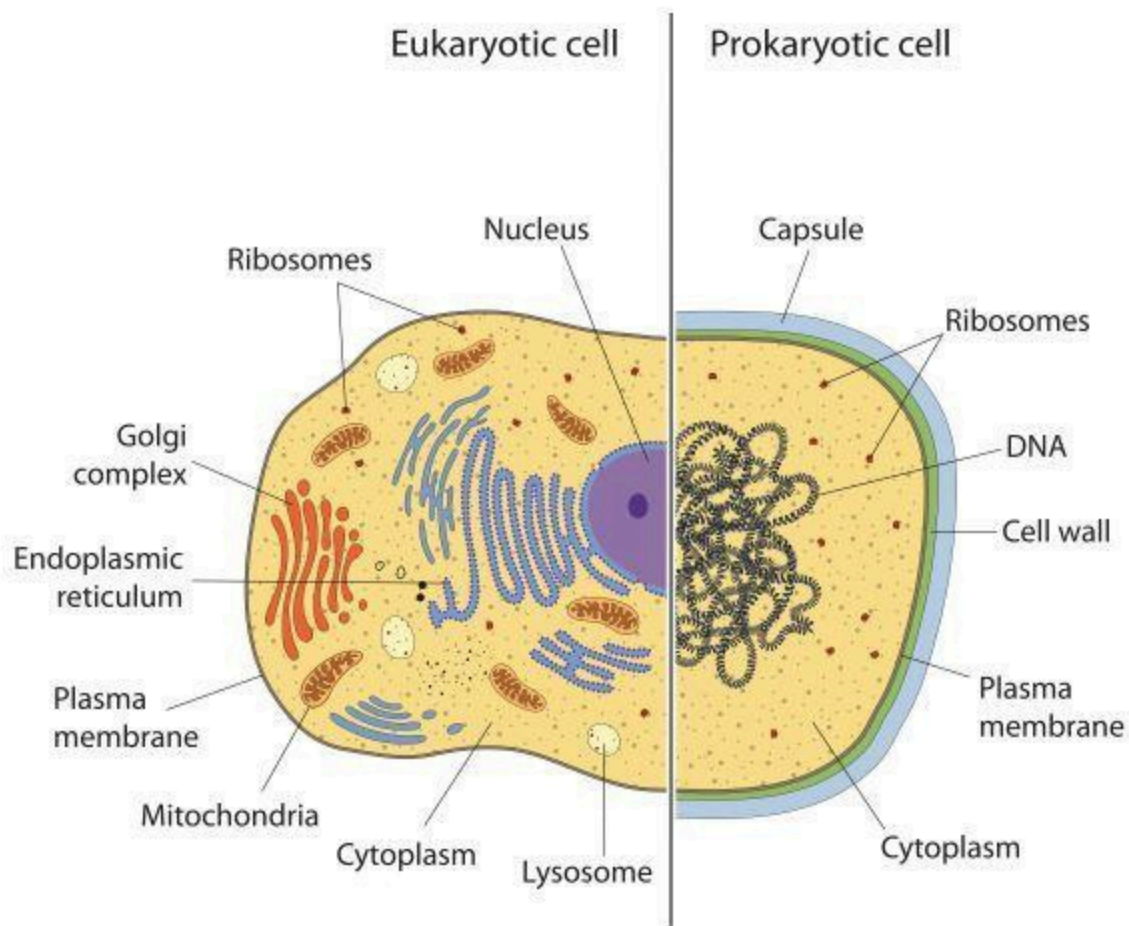


### Question 4 : Retell Lecture

You will hear a lecture. After listening to it, in 10 seconds, please tell what you have just heard from the lecture in your own words. You will have 40 seconds to give your response.

Play the audio to listen to the related recording.

#### Item 1:



## Question 5 : Answer Short Questions

Play the audio to listen to the related recording. You will hear some questions. Please give a simple and short answer to each one. Often just one or a few words are enough.

# Sample Answers

## Personal Introduction

My name is ....., I was born and raised in ....., and I am ....years old. I have completed my graduation in ..... Some of my favorite activities are painting, volunteering, and video games. I want to relocate to Canada to obtain a master's degree in computer application in order to expand my career prospects. I'm taking the PTE Academic exam as part of a requirement to assess my English proficiency in order to attain my objectives.

## Question 2 : Repeat Sentence

- 1.If you want to sell your book, it must have a bibliography.
- 2.Please prepare a PowerPoint presentation for tomorrow's meeting.
- 3.The timetable for the next term will be available next week.
- 4.There will be an open book exam on Monday, the twenty-eighth.
- 5.It's within that framework that we're doing our survey.
- 6.In marketing- short-term thinking leads to mint problems.
- 7.Students should take advantage of the online internet before attending the lecture.
- 8.You need to read the chapter before the management class.
- 9.Essays with few or no citations will be regarded as invalid.
- 10.There is a range of housing options near the university.

## Question 3 : Describe Image

### Image 1

The provided image depicts the operation of a solar yard light. The items that make a solar lamp complete are a glass cover, solar cells, photoresistor, battery, controller board, LED, and lamp cover. The solar cells, as well as a photoresistor to switch on the LED, are linked directly to the battery and controller board. Solar cells turn sunlight into electrical energy during the day and store it temporarily in the battery, as shown in this illustration. In addition, a glass cover is installed at the top to protect the lamp from harsh weather conditions.

### Image 2

The given map of India depicts information about Land use detail. It is clear from this map that the maximum area of India is arable land and the maximum area, whereas the majority of West India covers forest. In addition, plantation and non-agricultural land can be found on India's western coast. Scrubs and grasses, on the other hand, are found on India's east and south

edges. Apart from that, the majority of India's unproductive land can be located in the country's northern region.

### **Image 3**

The line graph shows growth in renewable energy consumption during the period 1949-2008. Renewable energy use more than doubled over the period, with robust growth in biofuels. This sector did not exist in 1980 but experienced a steep rise during the 2000s to over one quadrillion Btu per year. Wind power emerged late in the period and showed a gradual climb to 0.5 quadrillions Btu, suggesting it may replace wood and hydroelectricity as the primary sources of renewable energy in the future.

### **Question 4 : Retell Lecture Transcript:**

In this lesson, we discuss the similarities and differences between the eukaryotic cells of your body and prokaryotic cells such as bacteria. Eukaryotes organize different functions within specialized membrane-bound compartments called organelles. These structures do not exist in prokaryotes. Your body is composed of trillions of cells - lots of different types of cells that make up different organs and other parts of your body. Your body is also where 10 times that number of bacteria are called 'home sweet home.' But don't be afraid - these bacteria do more good than harm to you. And besides, just in case you wanted to strike up a conversation with your tenants, you and your bacteria do have a few things in common. All cells share some common characteristics that make them living things. All organisms are composed of cells, the basic fundamental unit of life. They contain DNA as an inheritable genetic material, and they can reproduce. They transcribe DNA into RNA and translate RNA into proteins on ribosomes. They can also regulate transport across a cell membrane and require chemical energy for some cellular processes. Organelles are the biggest difference between bacteria and cells that make up the human body.

### **Summary of the Lecture:**

The similarities and differences between eukaryotic cells in your body and prokaryotic cells like bacteria are explained in this lesson. Eukaryotes are called organelles because they specialize in membrane-bound compartments. Organelles are the most significant difference between bacteria and cells that make up the human body. The human body is composed of trillions of cells - various cells that make up different organs and other parts of your body. Your body is also where 10 times that number of bacteria are called home sweet home. But don't be afraid - these bacteria do more good than harm to you. They can also control transport across a cell membrane and require chemical energy for some cellular processes. These bacteria do more good than harm to you.



## **Question 5 : Answer Short Questions**

1. **A planet or a galaxy that is very distant can be seen with what device?**  
Ans: Telescope
2. **A specialist who repairs leaking water pipes is called a\_\_\_\_\_?**  
Ans: Plumber
3. **At what ceremony do students receive their degree or diploma at the end of their period of study?**  
Ans: Graduation
4. **The computer, the telephone, and the typewriter, which one was first invented?**  
Ans: Typewriter
5. **Despite all the advances between the sexes being equal, would more men or women play professional football?**  
Ans: Men