

SELT

A1

Entry Level 1

(Speaking & Listening)

Practice Paper 1

Test time: 8-9 minutes

I = Interlocutor

C = Candidate



By Divine
Training

[www.divine-
trainings.com](http://www.divine-trainings.com)

Copyright © 2024 | Powered by Divine Training
Divine Associates Registration no. 0083936

PART 1 (1 minute 30 seconds)

I: Hello. My name's *(give full name)*. And you are *(give candidate's full name)*, right?

C: *(Confirms.)*

I: Thank you. Can you spell your family name for me, please?

C: *(Spells family name.)*

I: Thank you. Where are you from?

C: *(Responds.)*

I: Thank you. Exam begins. Speaking and Listening, Preliminary level, *(give today's date)*.

I: Now, Part One. I'm going to ask you some questions about yourself. *(Choose **three** questions from the list.)*

Questions

- What do you do in your free time?
- What do you do when you wake up?
- When is your birthday?
 - How often do you go out?
 - Tell me about the place you live.
- What time do you usually go to bed?
- What's your favourite food?
- Where do you go on holiday?
 - Tell me about your best friend.
- When do you use a car?

C: *(Responds.)*

I: *(Interlocutor responds and/or comments **briefly**.)*

I: Thank you.

PART 2 (1 minute 30 seconds)

I: Now, Part Two. I'm going to read some situations. I want you to start or answer. First situation (*choose one situation from A*).

A

- We're friends. I start.
Would you like to go to the museum on Sunday?
- I'm your teacher. I start.
- *Do you know why Mary isn't in class today?*

- We're in the street. I start.
Excuse me. Where's the City Hotel, please?
- I work in a café. I start.
- *Hello. What would you like to drink?*

C: (*Responds.*)

I: (*Role-play the situation with the candidate – approximately two turns each.*)

I: Second situation (*choose one situation from B*).

B

- We're friends. You haven't got your phone with you. You start.
- You're new in my town. You want to find a supermarket. You start.
- I work in a shop. You want to buy a jacket. You start.
- We're in the same English class. You want help with the new homework. You start.

C: (*Initiates.*)

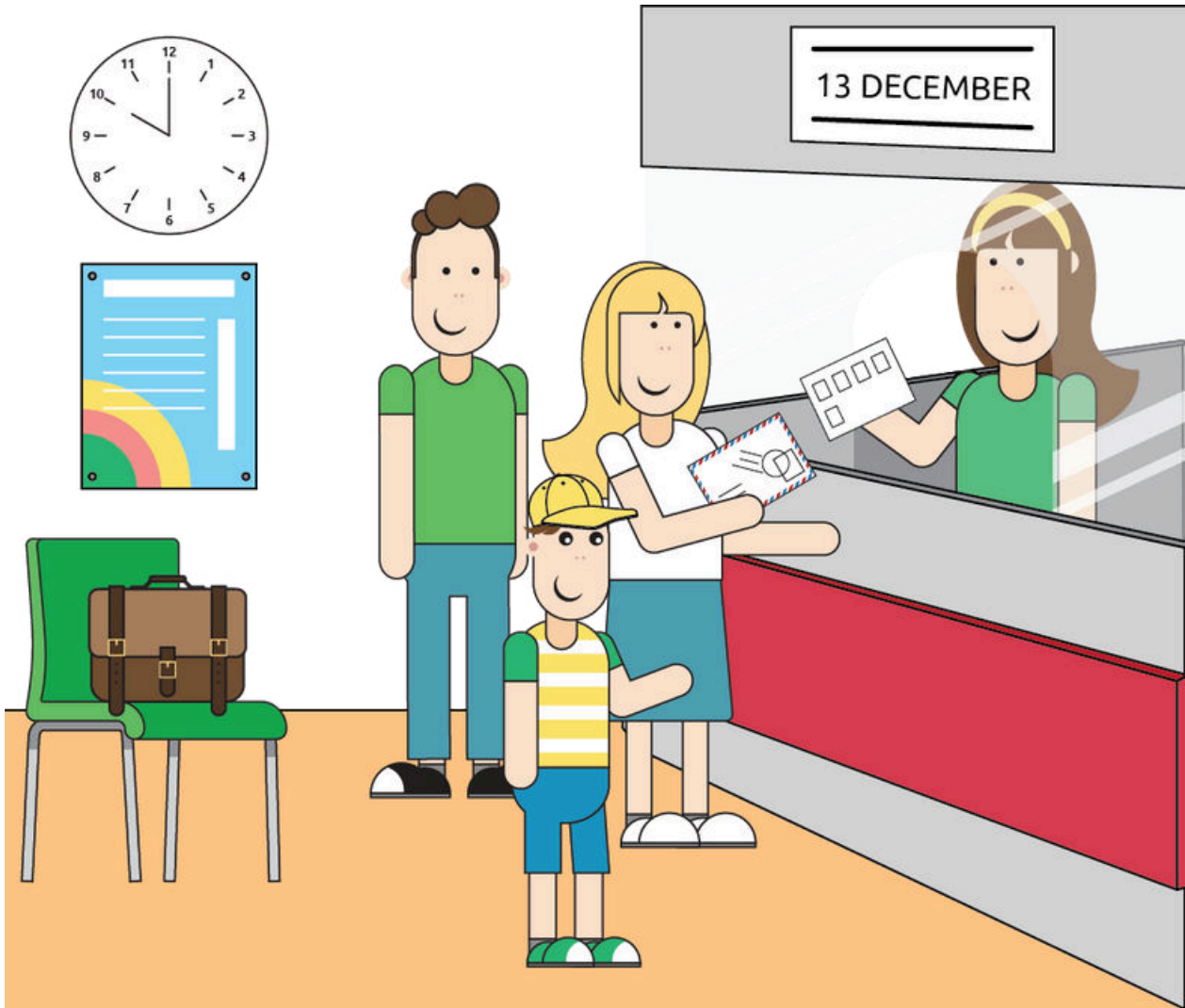
I: (*Role-play the situation with the candidate – approximately two turns each.*)

I: Thank you.

PART 3 (1 minute - 1 minute 30 seconds)

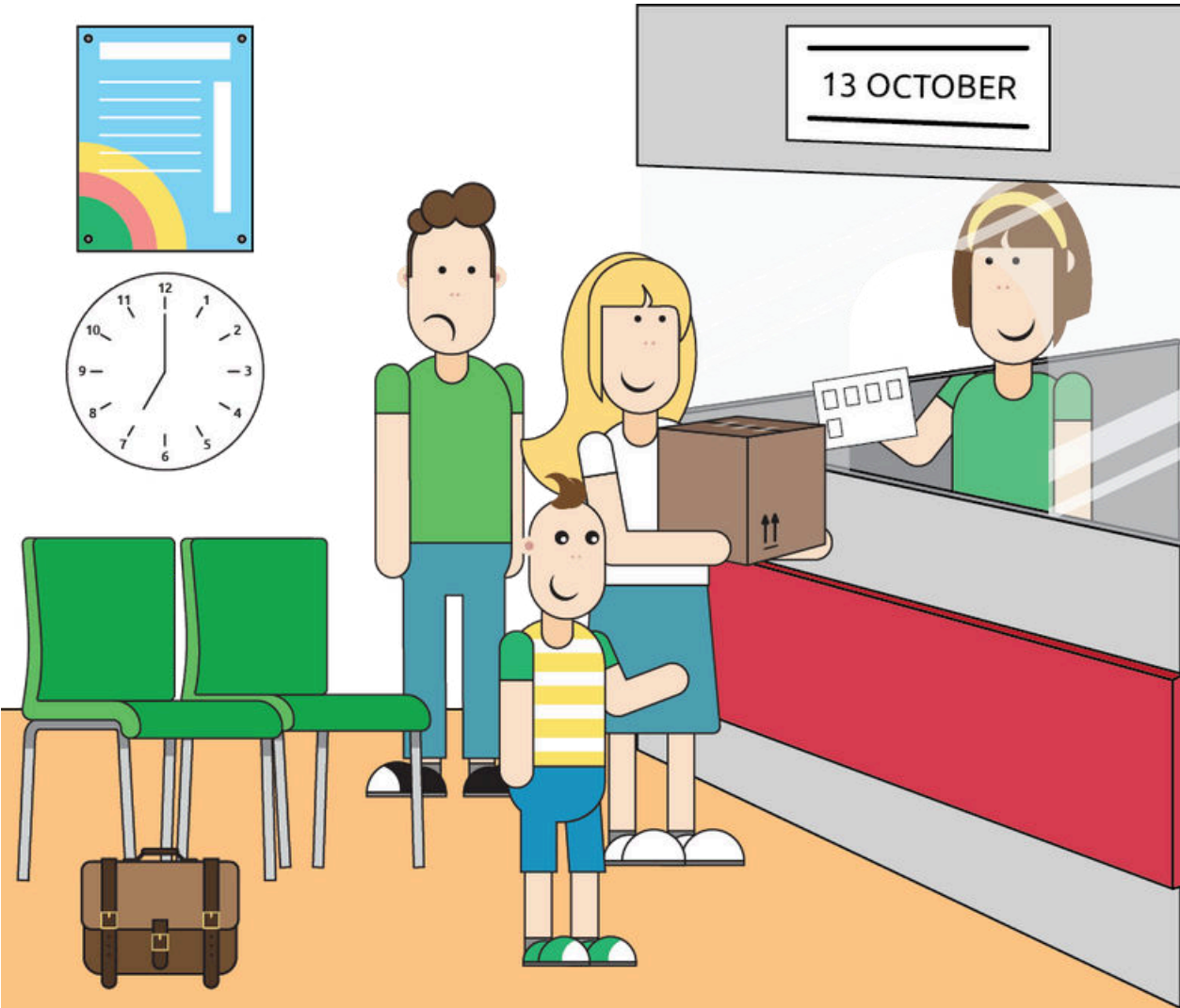
I: Now, Part Three. Here's a picture of a post office. I have a different picture of a post office. Let's ask and answer questions about the two pictures. I start.

Interlocutor's Task Sheet



I: Thank you.

Candidate's Task Sheet (Interlocutor's copy)



PART 4A (2 minutes - 2 minutes 30 seconds)

I: In Part Four I'm going to read something. I'm going to tell you about Anna and what she enjoys watching on TV. I'll read it two times. Listen and take notes on your paper. I'll then ask you these questions. *(Allow 10 seconds for the candidate to read the questions.)*

I: *(Read script at an appropriate pace.)*

My name is Anna and I like watching television. I like a lot of TV programmes but my favourite one is about animals. It is on TV every Saturday at 5pm. I don't watch television every day because I study. I only watch programmes at the weekend. I don't like watching the news on TV. I have a big television set in my bedroom and a small one in the living room.

I: Now I'll read it again. *(Read the script again.)*

I: Questions. *(Ask the following questions, allowing time for the candidate to respond orally.)*

Questions

1. What is Anna's favourite TV programme about? *(animals)*
2. When does Anna watch television? *(at the weekend / Saturday and Sunday)*
3. Where is Anna's big television? *(in her/the bedroom)*

I: Thank you.

PART 4B (2 minutes including follow-up questions)

I: Now you're going to talk on your own for half a minute. Your topic is **what you enjoy watching on TV**. You now have thirty seconds to write some notes to help you. You're going to talk about **what you enjoy watching on TV**.

I: *(Candidate's name)*, please start.

C: *(Talks.)*

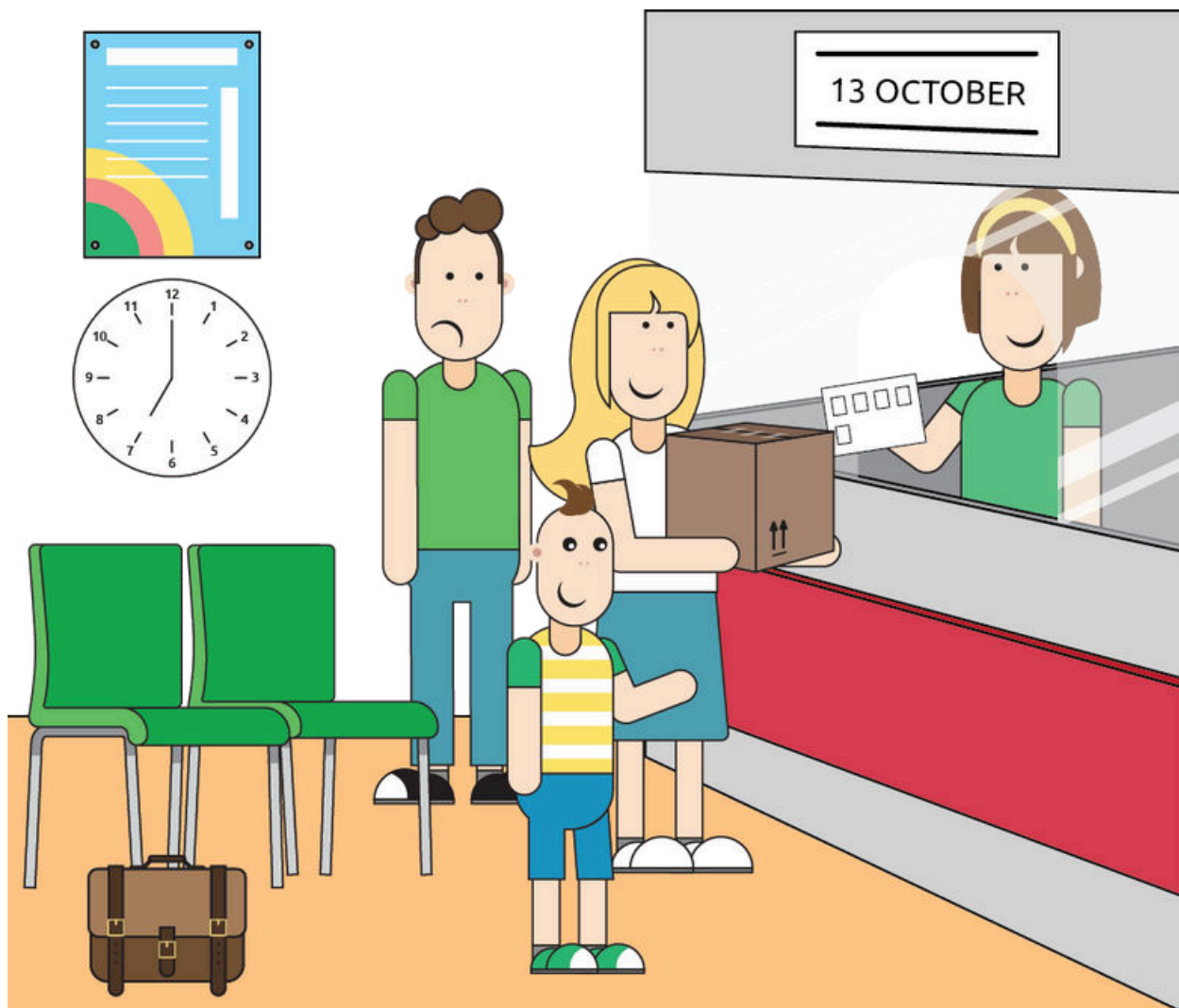
I: *(When candidate has talked for a maximum of half a minute, say, 'Thank you', and then ask follow-up questions, as time allows.)*

Follow-up questions

- How much television do you watch?
- Do you watch sports on TV?
- How often do you go to the cinema?
- Are there programmes you don't like?

I: Thank you, *(give candidate's name)*. That is the end of the exam.

Candidate's copy Task Sheet for Part 3



Question Sheet for Part 4A

1. What is Anna's favourite TV programme about?
2. When does Anna watch television?
3. Where is Anna's big television?