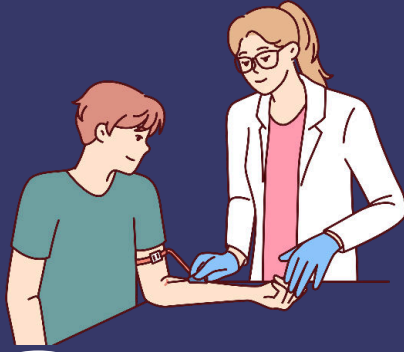


**Divine Associates**



# OET

## Basic Overview Of Test



**BY Divine Training**

**[www.divine-trainings.com](http://www.divine-trainings.com)**



**Copyright © 2024 | Powered by Divine Training  
Divine Associates Registration no. 0083936**

# Taking OET

## Understanding OET

Before getting started with the content of OET, let's look at some background information about the test.

### WHAT IS OET?

The Occupational English Test (OET) was developed to test healthcare professionals' English communication abilities. OET tests English language ability in four areas: Listening, Reading, Writing and Speaking. Test-takers will need to demonstrate their ability to understand and answer questions about general healthcare consultations and presentations, in addition to texts in a general healthcare setting. Test-takers are required to write accurate, professional letters with the aid of prompts and use speaking prompts to carry out appropriate and effective conversations with patients, relating to specific healthcare professions.

### WHO PRODUCES OET?

OET was developed by Professor Tim McNamara at the University of Melbourne. It has been owned and produced by Cambridge Box Hill Language Assessment Trust – a venture between Cambridge English and Box Hill Institute – since 2013.

### WHICH VERSION OF OET?

OET can be taken by healthcare professions in any of the following 12 professions: Dentistry, Dietetics, Medicine, Nursing, Occupational Therapy, Optometry, Pharmacy, Physiotherapy, Podiatry, Radiography, Speech Pathology, and Veterinary Science. The Reading and Listening parts of this book are relevant to all 12 healthcare professions. The Speaking and Writing parts of this book cover Nursing and Medicine specific test content. Please note that if you are a healthcare professional from a different profession, the Speaking and Writing sections of your test will vary from the content provided in this book.

## WHEN WAS OET UPDATED?

In September 2018, Cambridge Boxhill Language Assessment launched an updated format of OET in the Reading and Listening sections of the test, to more accurately assess the English language abilities of test-takers in a healthcare setting, and create additional assessment criteria for the Speaking Test.

## An Overview of OET

### *Format and Content*

OET is approximately 2 hours and 45 minutes long and consists of 42 Listening questions,

42 Reading questions, 2 Speaking role-plays and 1 Writing task. The following chart gives a breakdown of times for each part of the OET

Test Section	Time	Tests candidate's ability to
<b>Listening</b>	40 minutes	listen and understand a range of recordings on healthcare topics from different healthcare settings.
<b>Reading</b>	60 minutes	read and understand various texts on healthcare topics from different healthcare settings.
<b>Writing</b>	45 minutes	write a letter, usually a referral letter using information provided in patient case notes.
<b>Speaking</b>	20 minutes	communicate with a patient in a real-life context through the use of role-plays.

## SCORING

In OET, candidates receive a numerical score ranging from 0 to 500 in ten-point increments (e.g. 350, 360, 370...). The numerical scores will be mapped to a separate letter grade for each section of the test, ranging from A (highest) to E (lowest). There is no overall grade

Previous OET grading	New format OET scores from September 2018	OET band descriptors	IELTS equivalent band score
<b>A</b>	500 490 480 470 460 450	Can communicate very fluently and effectively with patients and health professionals using appropriate register, tone and lexis. Shows complete understanding of any kind of written or spoken language.	8.0 – 9.0
<b>B</b>	440 430 420 410 400 390 380 370 360 350	Can communicate effectively with patients and health professionals using appropriate register, tone and lexis, with only occasional inaccuracies and hesitations. Shows good understanding in a range of clinical contexts.	7.5–7.0

<p><b>C+</b></p>	<p>340 330 320 310 300</p>	<p>Can maintain the interaction in a relevant healthcare environment despite occasional errors and lapses, and follow standard spoken language normally encountered in his/her field of specialisation.</p>	<p>6.5</p>
<p><b>C</b></p>	<p>290 280 270 260 250 240 230 220 210 200</p>		<p>6.0–5.5</p>
<p><b>D</b></p>	<p>190 180 170 160 150 140 130 120 110 100</p>	<p>Can maintain some interaction and understand straightforward factual information in his/her field of specialisation, but may ask for clarification. Frequent errors, inaccuracies and mis- or overuse of technical language can cause strain in communication.</p>	
	<p>90 80 70 60 50</p>	<p>Can manage simple interaction on familiar topics and understand the main point in short, simple messages, provided he/she can ask for clarification. High density of error and mis- or overuse of technical language cause significant strain and breakdowns in communication.</p>	<p>Less than 5.5</p>

<b>E</b>	40		
	30		
	20		
	100		

## TIMING

OET is a timed test. This means that your score greatly depends on being able to complete the questions within the time allowed.

We will indicate the amount of time you will be given to complete each part of the test . In the Listening Test, you will not need to time yourself, as you will be advised when to answer questions while you listen to the recording, but you will still need to keep up with the pace of the recording. At first, you may not feel you have enough time to answer the questions and complete the tasks effectively.

Remember that even if you are not able to complete a whole section within the time limit, you should still include an answer – even if it is a guess. You may choose the correct answer by chance, and gain an additional point; if you leave those questions unanswered, you will receive no points.

As you go through this, pay attention to the amount of time you spend answering questions and completing tasks; note when you are moving too slowly, and practise speaking, writing and answering questions more quickly. When you are ready to take the Practice Test, be sure to time yourself very carefully, to give yourself the most realistic

test experience possible, and to show you exactly where you need improvement.