

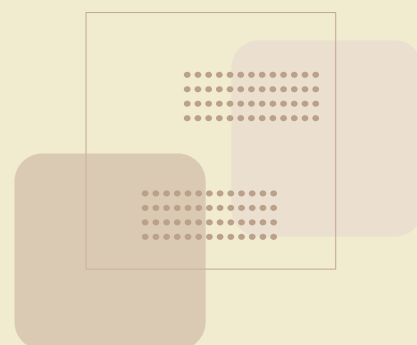
GRE

PRACTICE

QUESTIONS



BY Divine Training
www.divine-trainings.com



Copyright © 2024 | Powered by Divine Training

Divine Associates Registration no. 0083936



Question # 1

Conflict between generations may be a problem that has persisted for centuries, but the nature and intensity of the conflict obviously _____ in response to changes in social and economic conditions

- A. increase
- B. disappear
- C. decline
- D. vary
- E. wane

Question # 2

The (i)_____ of the old man's garb and home belied a (ii)_____ nature, and many people lamented his tendency to be outright juvenile in somber circumstances.

For each blank select one entry from the corresponding choices. Fill all blanks in the way that best completes the text.

- A. (i) austerity
- B. (i) obsolescence
- C. (i) poverty
- D. (ii) jovial
- E. (ii) jejune
- F. (ii) inquisitive

Question # 3

Due to his lengthy industry-friendly record, the governor was thought to be (i)_____ pro-business. So it was (ii)_____ when he announced the creation of a large environmental preserve at the expense of industry interests. However, his decision was not met with unqualified enthusiasm. Many astute observers noted the politically (iii)_____ motive of using the decision to court independent voters.



For each blank select one entry from the corresponding choices. Fill all blanks in the way that best completes the text.

- A. (i) desultorily
- B. (i) unsustainably
- C. (i) staunchly
- D. (ii) debilitating
- E. (ii) arresting
- F. (ii) vitiating
- G. (iii) ingenuous
- H. (iii) uncouth
- I. (iii) opportunistic

Question # 4

After a 12-year imprisonment under false treason charges, Alfred Dreyfus was justly _____, effectively putting an end to the French political scandal known as the Dreyfus Affair.

Select the **two** answer choices that, when used to complete the sentence fit the meaning of the sentence as a whole and produce completed sentences that are alike in meaning.

- A. abrogated
- B. exonerated
- C. acquitted
- D. interred
- E. assassinated
- F. shunned

Question # 5

The protest at the capital yesterday was an absolute _____; while the activists had the best of intentions, the demonstration showed a complete lack of organization and was actually counterproductive to their cause.

Select the **two** answer choices that, when used to complete the sentence fit the meaning of the sentence as a whole and produce completed sentences that are alike in meaning.



- A. stalemate
- B. debacle
- C. impasse
- D. fiasco
- E. obstacle
- F. enigma

Question # 6

In response to recent criticism of inhumane and unhygienic practices throughout the agricultural industry, farmers resolved to commission an advertising campaign portraying virtuous ranchers that would _____ the industry.

Select the two answer choices that, when used to complete the sentence fit the meaning of the sentence as a whole and produce completed sentences that are alike in meaning.

- A. recriminate
- B. exonerate
- C. vindicate
- D. repudiate
- E. eradicate
- F. adulterate

Question # 7

If the integer m is a multiple of both 10 and 12, then all of the following must be factors of m EXCEPT

- A. 15
- B. 12
- C. 10
- D. 8
- E. 6



Question # 8

Which of the following expressions are factors of 1217

Indicate all possible correct answers.

- A. $(-2)^2 (-3)^4$
- B. $12^3 + 12^3$
- C. 4^{18}
- D. $2^{16} \times 2^{15}$
- E. $3^{17} \times 4^{17}$
- F. $12^{17} + 12^{17}$

Question # 9

The average (arithmetic mean) of the numbers v , w , x , y , and z is j , and the average of the numbers x , y , and z is k . What is the average of v and w in terms of j and k ?

- A. $(j - k) / 2$
- B. $(j + k) / 2$
- C. $(5j - 3k) / 3$
- D. $(5j - 3k) / 2$
- E. $(5j - k) / 2$

Question # 10

$$p^2 + 3p + 2 = 0$$

Quantity A: p

Quantity B: 1

Compare the two quantities and select the appropriate answer.

- A. Quantity A is greater.
- B. Quantity B is greater.
- C. The two quantities are equal.
- D. The relationship cannot be determined from the information given.

Question # 11

g and h are consecutive multiples of 4.

Quantity A: $5(g - h)^2$

Quantity B: 80

Compare the two quantities and select the appropriate answer.

- A. Quantity A is greater.
- B. Quantity B is greater.
- C. The two quantities are equal.
- D. The relationship cannot be determined from the information given.

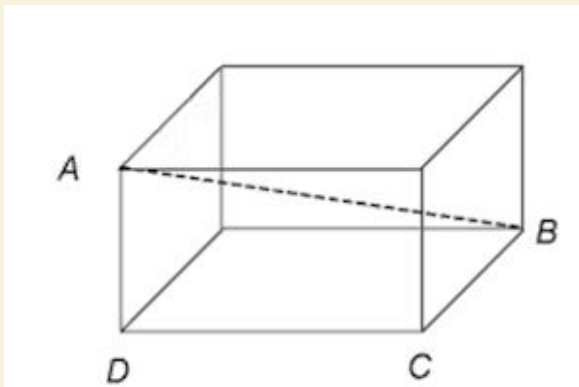
Question # 12

The figure below is a rectangular solid.

$AB = 17$, $AD = 8$, and $BC = 9$.

Quantity A: The volume of the rectangular solid

Quantity B: 864



Compare the two quantities and select the appropriate answer.

- A. Quantity A is greater.
- B. Quantity B is greater.
- C. The two quantities are equal.
- D. The relationship cannot be determined from the information given.